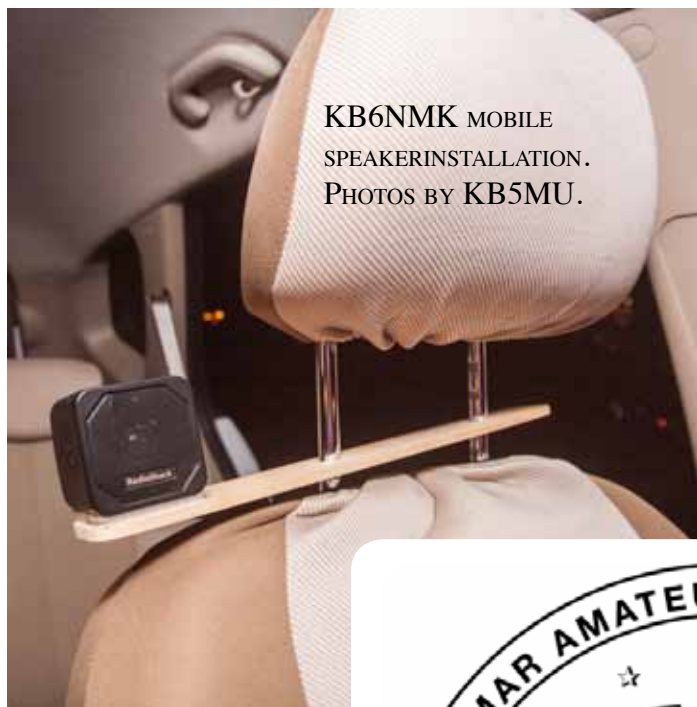


# SCOPE

## THE PALOMAR AMATEUR RADIO CLUB NEWSLETTER



KB6NMK MOBILE  
SPEAKER INSTALLATION.  
PHOTOS BY KB5MU.

Jo Ashley, KB6NMK, came up with a clever way to mount a speaker close to the driver's ear in just about any car, with no modification to the car. The driver's headrest is typically mounted on two parallel posts, so it can be adjusted to the right height for each driver. Generally the headrest and its posts can be pulled all the way out of the seat back.

It's quite easy to drill two holes in a strip of wood and pass the headrest mounting posts through them. A small enclosed speaker can then be mounted on the strip of wood as shown here. In Jo's installation, the speaker wire is then routed behind the driver's seat, tucked inside a fabric seat cover, to the main body of the transceiver mounted beneath the seat. The radio's control head is mounted conveniently on top of the steering column.



KB6NMK RADIO HEAD  
INSTALLATION.



# Save the Date

## Club Meeting

**3 April 2013**

The 7:30pm program is  
Wild Bill & Ellen: "An  
Electrifying DXpedition to  
Qatar 2010 CQWW"

## Board Meeting

**10 April 2013**

Palomar Amateur Radio  
Club board meeting at  
7:30pm at K2RP QTH.

## Field Day Work Parties

**6 April 2013**

Contact Greg KI6RXX  
or Charlie NN3V to  
volunteer. 10am - 2pm!

Fold & Staple that did February Scope  
Al Donlevy W6GNI Kathy Donlevy  
Jo Ashley KB6NMK Sonny Stires WA5ACE  
Roni Elsberry W6EPM Art KB6YHZ

## Advertisements are free for members

Have items that need to find a new home? Advertise here! Send your ads to [scope@palomararc.org](mailto:scope@palomararc.org)

### For Sale

Swan Mark II linear amplifier. Clean, working well \$650.

Heathkit HP23B Power Supply with 11-pin cable. Looks and works very well. \$70.  
Ron K2RP@arrl.net (760) 436-8109

### For Sale

The Alinco DJ-580 illuminated keypad button does not work.....No Backlighting of keypad, Transmit coverage is: 130-173.995 and 400-519.0995 with Mars/Cap Mods completed, Radio has no worn pads and all LCD display functions work as new, case looks like new, this radio comes with (1) EBP-20X 7.2 volt 1650Mah battery used only a few time before put away, (1) EBP-20N 7.2v 700Mah pack (not sure how long it will last) (2) EDH-11 dry cell pack (1) Yaesu dual band antenna and (2) Alinco EDC-24 Slow chargers and (1) DJ-580. I have checked this radio on simplex and our local repeater and it sounds fine, you would be hard pressed to find a radio in better condition than this one. excellent condition, As with all electronics this radio is sold AS IS, It will not be DOA, asking \$100 OBO, James 760-722-2797.

### For Sale

Kenwood Communications Receiver, Model R-599 with factory installed 2m converter. \$100.00  
Pete, K6JQE 858-755-4838. Solana Beach



*Anyone need a high current 12 VDC power supply, maybe for solid state amp or something similar? It is two very efficient 6 V DC supplies in an acoustic wood box.*

*It's custom built to cut down noise of its two 4-inch muffin fans.*

*I built it for Larry N6NC 10 years ago to power his 500 watt Solid State HF amp and Larry no longer needs it as he sold that amp.*

*It weighs 50 lbs.*

*Dennis N6KI*



In answer to the EU proposal to update the standard phonetic alphabet (see page 10) the FCC has received the following proposal.

A Are	N Nine
B Bee	O Owe
C Cite	P Pseudonym
D Double-U	Q Queue
E Eye	R Rap
F Five	S Sea
G Genre	T Tsunami
H Hoe	U Understand?
I I	V Vie
J Junta	W Why
K Knot	X Xylophone
L Lye	Y You
M Me	Z Zero

Follow up information for the most recent FARC meeting program:

Lets Get Serious About Digital Communications: Using RMS Express.

Links to down load, and to videos:  
<http://www.fallbrookarc.org/digital.html>



The drawing, having completed ticket sales to cover the item, was conducted at the end of the March 2013 meeting. The winning ticket, drawn by some scoundrel, belongs to Tim N6CUX who chose the rig runner power block with usb, crimper, and starter pack of power pole terminals.

# HAM RADIO OUTLET

Jose XE2SJB  
 Jerry N5MCJ  
 Joe N6SIX

H  
R  
O

**KENWOOD**  
**rf CONCEPTS**  
**DIAMOND**  
**US TOWERS**  
**KANTRONICS**  
**YAESU, MFJ, ICOM**  
**BENCHER, Inc.**  
**HUSTLER**  
**COMET**  
**AMERITRON**

**Astron,**  
**AEA,**  
**OUTBACKER**  
**Larsen Antennas**  
**TEN-TEC**  
**Hy-gain, Tri-EX,**  
**Cushcraft And Others**  
**too**  
**Numerous to**  
**Mention!**

Drop in to see our display of working equipment. Find out about Pkt location determining equipment (APRS). Check our complete line of magazines, ARRL books, license manuals, and Bulletin Board with all sorts of Goodies listed.

Open: 10a.m. – 5:30p.m.  
 Monday thru Saturday *Ask about our great prices*  
 858 560-4900  
 or toll free 1-800-854-6046

**Directions:** On 163, take **Clairemont Mesa Blvd.** off ramp to East. Stay in right-hand lane. Turn right at stoplight. As you are turning right you can see our beams in this shopping center. Travel 100 yds. On Kearny Villa Rd. and U-turn back to shopping area and HRO sign. Be sure to see our equipment in action on **real** antennas!

# OPERATING DAY

Sunday, April 28, 2013



FRY'S ELECTRONICS

150 South Bent Street

SAN MARCOS, CALIFORNIA 92069

9:30 AM to 5:30 PM

HOSTED BY PALOMAR AMATEUR RADIO CLUB

[www.palomararc.org](http://www.palomararc.org)

contact Dennis KD6TUJ (760) 672-0223

Come operate on the ham bands at Fry's  
70cm, 2m, 6m, 10m, 15m, 20m



# KI6LKP Mobile Installation

In the summer of 2011 I realized that my first HF rig would most likely be mobile since my HOA says no to visible antennas. Although my truck is a 2002 model, I wasn't anxious to be drilling any holes in it. I chose to use the Yaesu 857d, and the ATAS 120 antenna because it's all basically "plug and play". Starting at the battery are (2) fuses, one positive, one negative. Power-Poled to #8 stranded through the firewall, under the driver's side door thresholds, and ending behind the rear seat. This feeds the radio that is mounted to a 3/8" piece of plywood, and hidden



PHOTO 5

under the rear seat on the driver's side. Here it has good ventilation, is out of the way, and is very easy to access and remove. (Photo 5)

The remote head fits nicely on the lower part of the dash. The position is handy since I can easily rest my elbow on the armrest and make radio adjustments



PHOTO 1

while driving. (Photos 1 & 2)

For operating while in the passenger's seat, I fabricated a round wooden block that perfectly fits into one of the cup holders on the armrest. Enough control wire is coiled below the dash to easily move



PHOTO 3



PHOTO 4

the remote head between these two locations. A nice feature of the 857 is a headphone jack on the remote head. This is particularly nice when my wife is driving and I want to play radio. (Photos 3 & 4) Typically, I use the Vertex speaker that neatly tucks



PHOTO 2



between the front center seat and the floor without screws. (Photos 9 & 10)

Antenna mounting is basic. For the ATAS, the Diamond C-101 on a simple stainless “CB” mount. It even comes with a nice cap to keep water out when the antenna is removed. When the ATAS is removed, the mount is virtually invisible. (Photos 6 & 7)

For 2-meter and 440, I still use a Larsen glass mount.



PHOTO 9



PHOTO 8

Although it's not the best, it works okay, and makes an easy installation. (Photo 8)

Being a diesel, there is no ignition. However, at times, the electronically controlled fuel injectors can be annoying. To help eliminate this, I added numerous grounding straps throughout the truck. Key points are: Exhaust/frame, pickup bed/cab, and the hood/fender.

Occasionally, I get some noise, but not often. Someday, I would like to do a simple comparison between the ATAS and something like a HamStick. But I have no complaints, for I've had some pretty good SSB reports from Japan, New Zealand, Moscow, Christmas Island, N. Finland, and of course lots of domestic.

73, Dave KI6LKP



PHOTO 6



PHOTO 7



## Repeater Site in the Snow

photos by Paul KB5MU









Another winner! Congratulations Ron on your Sweepstakes achievement!

## New Phonetic Alphabet

Robyn Stewart

You may not be aware that a team of international academic authorities has been commissioned by the European Community to create a new phonetic alphabet free of patriarchal references (such as Papa) or words that might otherwise be offensive to minorities (e.g., Zulu) or those of differing gender. (Romeo, for instance, connotes a sexually obsessed individual, possibly a harasser.)

Fortunately, we have been able to obtain an early sample of their work. Try any common communication, and you will realize that a mere \$238 million has been well spent!

A	Affirmative	N	New
B	Bearing	O	One
C	Czar	P	Ptomaine
D	Disregard	Q	Question
E	Emergency	R	Repeat
F	Fire	S	Say-again
G	Gnu	T	Tsunami
H	Hijack	U	Unsafe
I	Iago	V	Violation
J	Jalepeno	W	Weather
K	Knew	X	Xerox
L	Llanelli	Y	Ypres
M	Mnemonic	Z	Zero



## **IMPULSE Electronics**

(760) 747-5277 – (866) 747-5277

[www.impulseelectronics.com](http://www.impulseelectronics.com)

**Your Connection for  
Emergency Power Solutions**

### **Power Products**

Power Pole Connectors – Power Cables – Tools  
AGM Batteries – Red/Black Zip Cord 14 – 8 GA

### **West Mountain Products**

RIGrunner – RIGblaster – Accessories  
PWRgates – Computerized Battery Analyzer  
Coax Cable – Coax Assemblies – Adapters  
Terminals – Coax Connectors – Battery  
Chargers – Battery Accessories  
Email [sales@impulseelectronics.com](mailto:sales@impulseelectronics.com)

## **Info for April SCOPE**

**Good news, PARC Membership is up over 5 members last month.**

**While we certainly appreciate Reinstated members, we believe many “Reinstatements” are due to members not aware that their membership was due.**

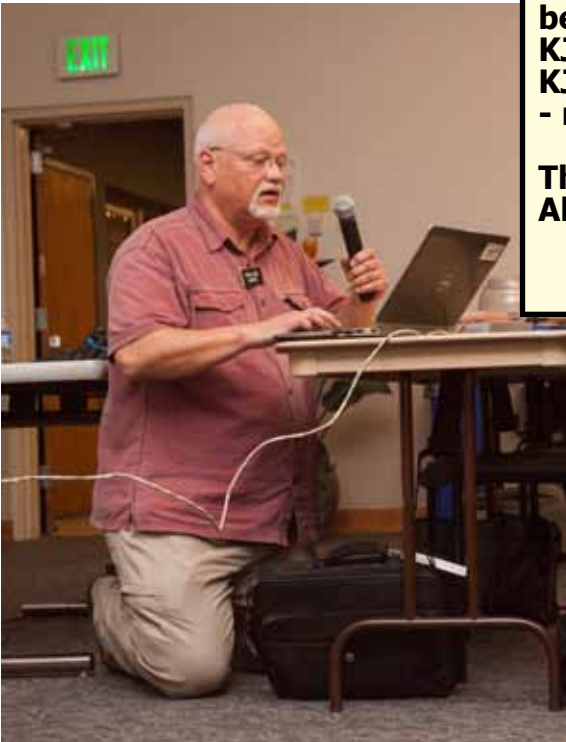
**Since many members now get the News Letter (SCOPE) on the web, they don’t receive the paper copy that we mark blue when membership is almost over, and red when the time for renewal has passed.**

**The Board has recommended that we publish member’s calls that are getting close to renewal time. Previously, we listed the memberships that had expired, and some didn’t like that at all!**

**The following members are due for renewal in a month or so. Hopefully, if your call is in this list, you will find time to send a check, or tell PayPal to renew your membership.**

**KJ6UMG, KI6IET, KJ6SKY, WO5K, KJ6ZAP, KJ6MDB, KJ6UWT, AND KJ6WUY,  
- more next month!**

**Thank you,  
Al W6GNI Membership**



February Meeting Photos - more meeting photos on the way in May! Photos by Paul KB5MU.





# A Troubleshooting Victory

by Dick K6KAL

PC Tip No. 77

## Strange Things Happen

I have used my Toshiba Laptop (A215-S7444) for several years now, adding and removing software for testing, both business and pleasure (Ham Related).

After several updates to my Win 7 partition, (Actually too many to count) I began receiving 'Blue Screens' indicating the system had to shutdown to prevent hardware damage. Each time I reviewed the 'Event' log, (*See Note 1*) it pointed to 'Core 1' error.

Thinking I had finally used up my machines usable life, I began shopping for a replacement. NOT. I could not let an ambiguous error go undefined. I did some research on the error codes, and concluded it was one of the 2 processor cores had gone bad. This was not a continuous thing, only intermittent, usually at the wrong time, like while contesting.

Each time the failure occurred, the pattern of errors was the same, culminating with the blue screen. At the time I did not pay much attention to the one 'Warning' message, only the main 'ERROR' messages.

After some on-line search I found a replacement processor for the outrageous price of \$ 17.00 with free shipping. (Amazon). I received it in record time, and went about replacing the processor. As long as I was replacing it, I choose one with a faster clock speed, so if it worked, it would be like having a new PC.

The installation went well, and the PC powered on with out a problem. The first few days of heavy use show no signs of hardware related issues. Then it started again when I was chasing some DX. All that work, and no Joy to be had.

I pored over the logs, now giving attention to the 'Warnings' . To my surprise, or not, during one of too many windows updates, Microsoft has updated the FTDI drivers. Well this should not be an issue, well knowing that I had 3 FTDI devices.

The one update at issue was a 'Keyspan' USB to serial converter that I have used for some time. The MS update saw the device, and deemed it 'old', and loaded 'Old' FTDI drivers unknown to me at the time. They seemed to work as before, except that when I got a little RF into the shack, the device would fail --- intermittently. This appeared to be when the software was accessing the DX spots from the clusters. The whole system would hang for a moment, then present the blue screen. The errors reported as to the 'communication failure' were red hearings.

The real error was that MS had caused the load of a USB ver 1.1 driver for my FTDI device, that was not compatible with the Win 7 64 bit operating system. You would

think they would have checked for this kind of issue, and warned or not allowed the device installation.

I have since updated the windows 7 64 bit driver from the Keyspan site (now a Tripp Lite company) and it has been working without error for almost two months.

This kind of issue is not normal, and if it were not for some dogged persistence on my part I would be the owner of a new laptop and the associated issues related to re-loading all that blasted software I have accumulated over time.

So the moral of the story if it has a MS label on it, do not believe every thing you read. With as many combinations of PC's, laptops and the associated USB devices, the error logs are only a starting point for the troubleshooting major issues.

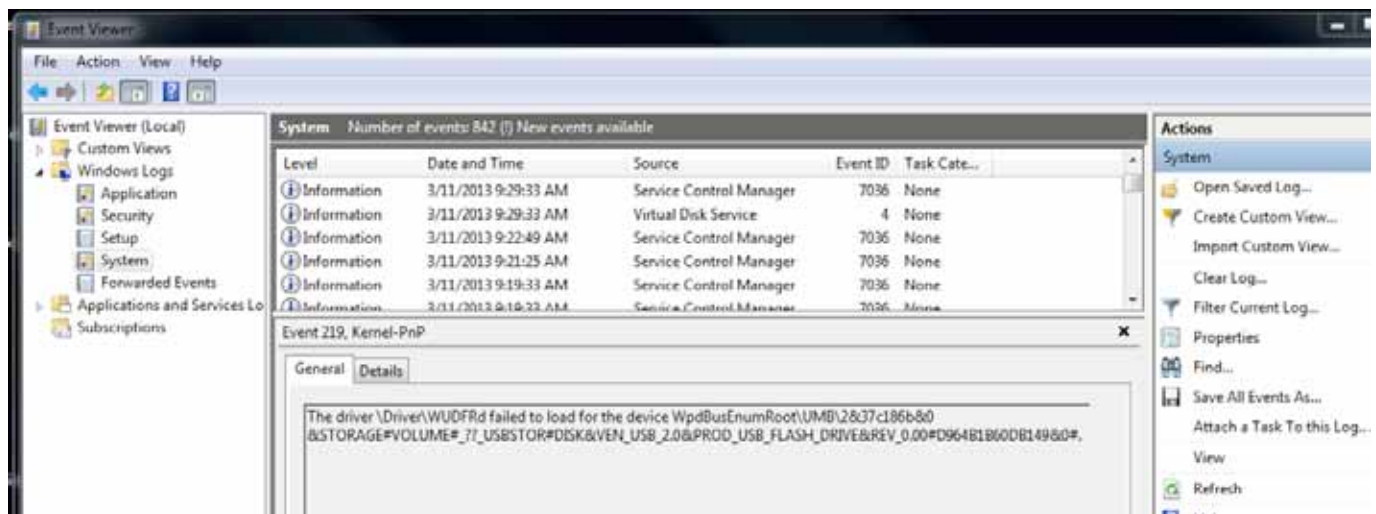
I used some of the tools I had outlined in other PC Tips I have authored (for EARS), and was able to spot the issue (eventually).

Do not give up on a troublesome PC. It may well be repairable.

### **Note 1:**

To access the 'Event' log, go to the Control Panel, then select 'Event Viewer'. After the utility loads, expand the 'Windows Logs' folder the left hand pane, then select 'System'. It may take some time, as it has to organize a possibly very long list of log entries. In the top center pane is the listing of all the log entries since the log was last cleared. I keep this log to somewhere less than 2000 events, as they can consume lots of disk space. The entries will be one of three types, Information, Warnings, or Errors.

The right hand pane has an option 'Clear Log' that will give you an option to save the old log before clearing. (Save for what ?). I just select the clear and delete the old log. It will not take long to fill up the log again.



# Windows, arghaaaaaaaaaaaaaa!

by John WB6IQS

There is an old engineering saying that goes "before you can begin to do anything, something else has to be done first". Last night was a perfect example of that.

I went on-line and found RSM Express for amateur packet radio. It is a Windows based program. Rich (NI6H) suggested that it was better than just using Putty or some other terminal emulator program. Putty is OK for just entering data parameters into the TNC and doing basic tests. However, to operate efficiently and send files you need a better program.

I downloaded about 6 parts of the RSM program (over 50 MBytes) and tried to load it onto an older Windows XP laptop. I was then told that I need some sort of Windows 3.5 Network program.

Looking around for Windows 3.5 Network and trying to download it, I then found out that I had to upgrade my Windows XP program. An hour later I had upgraded Windows XP and again tried to download 3.5 Network. Then I found out that the Windows XP 3.5 Network SP1 program was 231 MB in size.

At my slow AT&T DSL rates this was about 1.5 hours of downloading followed by about a half hour of installing.

I finished installing 3.5 Network SP1, was then able to install RSM Talk. Then before the computer would turn off I had more Windows XP updates (11 parts in total) to install. This took an additional 20 minutes.

Anyway, I worked at this from about 7 PM to 11:30 PM to install one RSM Talk program and I still have not attached a packet TNC to a radio.

John Kuivinen, WB6IQS@att.net  
March 12, 2013  
Vista, CA.

**NiCd Lady Company**

**Grace Lloyd**  
N6WPA  
[grace@nicdlady.com](mailto:grace@nicdlady.com)

[www.nicdlady.com](http://www.nicdlady.com)

**Custom Assembly • Rebuilds • Batteries**  
• Lead Acids • Replacement Packs  
20585 Camino Del Sol • Unit B  
Riverside, CA 92508  
800/906-6423  
951/653-8868  
Fax 951/653-5189

**Your Complete Battery Source**

**RF PARTS<sup>™</sup>**  
COMPANY  
*From Milliwatts to Kilowatts™*

Complete inventory for servicing amateur  
and commercial communications equipment

**RF POWER TRANSISTORS — TUBES — POWER MODULES**  
Diodes • Relays • Trimmers • Capacitors • Heatsinks  
Transformers • Chokes • Combiners • Wattmeters • Books

3-500ZG • 811a • 572B • 4-400a • 6146B • 8072 • 8560AS  
3CX400A7 • 3CX1200A7/D7/Z7 • 3CX1500A7 • 3CX3000A7  
4CX250B • 4CX250R • 4CX400A • 4CX800A • 4CX1500B

Merit W6NQ • Gary K6CAQ • Steve K6NDG • Rob WA6GYG • Doug K6DRA

**760-744-0700**

[www.rfparts.com](http://www.rfparts.com) • [orders@rfparts.com](mailto:orders@rfparts.com)





# Dear Fellow DXers:

As you know, there is a group of highly experienced DXpeditioners that will be heading to Wake Island in October 2013, using the callsign K9W.

There were 98 civilian contractors working for Morrison-Knutsen who lost their lives on the atoll in October 1943. This group has been named the "Forgotten 98". Our operation, observing the 70th anniversary of their deaths, will be dedicated to keeping their memory alive and honoring their sacrifice. Team Leader is Lou N2TU, and the Management Team is Joe W8GEX, Craig K9CT, and Joe AA4NN.

Wake ranks # 25 in DX Magazine's "Most Wanted Survey", and # 15 in Club Log's "Most Wanted Entities". A very experienced team has been formed, and they plan to operate five stations over a 14 day period, 160 to 6 meters on all modes. Wake Atoll's access is limited and the time frame is dictated by transportation and weather. Official landing permission has been granted and a firm date will be announced soon.

As with other DXpeditions of this magnitude, this is an expensive adventure. Location, transportation, island costs, and other logistics make this costly. Therefore, we are requesting financial support from the DX community. We ask that you present this request to your club membership for consideration, and we sincerely appreciate any help your club can provide. Clubs that contribute over \$500 will see their logo on the QSL card, and their logo will be on all presentations that will be shown worldwide. All contributions are also listed on our website. Procedures for making donations can be found on our website at [www.wake2013.org](http://www.wake2013.org) (<http://www.wake2013.org/>). You may also contact our treasurer, Craig Thompson K9CT ([craig@thompson.net](mailto:craig@thompson.net)) for assistance. Our website also shows the names of those that lost their lives there in 1943. We look forward to hearing from you, and thank you in advance for your consideration and financial support.

Janet Pater W8CAA  
Fundraising coordinator for the Wake Team

Commemorative Team members:  
Joe AA4NN, John K6MM, Carl K9CS, Craig K9CT,  
Mike K9NW, Lou N2TU, Tom N4XP, Tom ND2T,  
Dick W3OA, Joe W8GEX, Hal W8HC and  
Jerry

# Contest Results

Wow !

We done good !

While attending Yuma SW ARRL Convention, I joined Dave K6LL in Yuma

for ARRL DX CW

Lots of fun operation from Dave's QTh with NO Noise and his moderate stn gets out VERY WELL !

50 ft tower with 6 EL KT-34XA Tri-bander - 2 El Shorty Forty at 56 ft and 80 Mtr Wire Ant off tower

We even beat out Stanford ARC W6YX !!!

N6KI

Call	QSOs	Mults	hr	Score	Club
US/VE M/S HP					
W2FU	5252	589	48	9,267,915	NCC
W2RE	5163	571	48	8,839,080	HVCDX
K1RX	4343	489	44	6,371,181	YCCC
K2QMF	3876	538	46	6,255,864	OBONY
K8AZ	3665	557	48	6,122,544	NCC
K5TR	2899	554	~48	4,818,138	CTDXCC
K1HI	3306	460	48	4,551,240	YCCC
N3BNA	2680	508		4,082,796	FRC
K5RX	2450	510	48	3,742,380	NTCC
K0TV	2452	497	39	3,655,932	YCCC
AA9A	2159	488	45	3,159,312	SMC

**K6LL 2243 434 40 2,920,386 AOCC**

W6YX	2046	427	37:04	2,617,083	NCCC
N4GI	2032	376	30	2,285,328	FCG
KA2D	1353	369	22	1,497,771	OBONY
W3LJ	1143	365	30	1,251,585	PVRC
KA1IOR	970	333	26.25	967,032	YCCC
VE7IO	469	183	16	243,756	Orca
DXCC					
W7DXX	439	157	12	206,769	
AD4ES	344	198	8.15	204,336	FCG

SCOPE  
P.O. Box 73  
Vista, CA 92085-0073

PERIODICALS  
POSTAGE PAID  
AT VISTA CA  
92085-9998

Return service requested

Scope (USPS #076530) is published monthly by the Palomar Amateur Radio Club 1651 Mesa Verde Drive, Vista, CA 92084. POSTMASTER: Send address changes to SCOPE, P.O. Box 73, Vista, CA 92085. Periodicals postage paid at Vista, CA 92084. Dues are \$20 per year or \$35 per year for a family. Dues include a subscription to Scope.

You can join or renew your membership on the club's web site <http://www.palomararc.org>

Editor: Michelle Thompson W5NYV

Submissions: [scope@palomararc.org](mailto:scope@palomararc.org)

Questions? Ideas? Comments? [W6NWG@amsat.org](mailto:W6NWG@amsat.org)

### Featured Program:

At 7:30pm on the 3rd of April 2013, Palomar Amateur Radio Club welcomes Wild Bill: "An Electrifying DXPedition to Qatar ~ Operating as A73A in the 2010 CQ Worldwide SSB Contest"

You don't want to miss this one! Lightning doesn't strike twice.

We look forward to seeing you at the Carlsbad Safety Center, 2560 Orion Way, Carlsbad, CA.