

Continued on left-hand column of page 2

INSIDE THIS ISSUE

- 1 Major Geophysical Announcement, Club Events
- 2 Club Events
- 3 Contest Calendar, President's Address
- 5 Repeater, License/Class Information, SCOPE Challenge
- 7 Club Classified Advertisements
- 8 Wetlands Status for Club Member's QTH!
- 9 Del Mar Fair Booth, What to do about Interference

Yellowstone and Palomar

Michelle W5NYV

National Geographic News reports "Much of Yellowstone National Park lies in the crater of a massive volcano, formed in a landscape-altering eruption 640,000 years ago. The crater, or caldera, measures some 28 miles wide by 47 miles long. But the precise relationship between volcanic activity deep underground and Yellowstone's well-known network of geysers and other geothermal features has long been a puzzle for geologists.

Now a study by scientists with the U. S. Geological Survey (USGS) and the Yellowstone Volcano Observatory attributes changes in both surface terrain and geyser behavior to flows of magma, or molten rock, 9 miles below the Earth's surface.

"We're not sure yet if this is a normal episode or not," said Charles Wicks, a geologist at the USGS Western Region headquarters in Menlo Park, California."

The March issue of the journal Nature published a paper by YVO scientist Charles Wicks and colleagues about a period of uplift in the northern part of the Yellowstone caldera (Wicks, et al., 2006). It describes an uplift of 5 inches that occurred between 1997 and 2003, at a time when other changes were occurring in the Pacific Peninsular Palomar Mountain Range, located far to the southwest in Southern California.

Despite the distance between the two geologic formations, fumaroles in the Anza Borrego desert have steadily migrated towards the Palomar Mountain Range. The current theory, as proposed by Dr. Shellie Forbis of the Smith Volcano Institute in San Diego, is that the fumaroles are important harbingers of concurrent geologic activity.

"This type of volcanic activity may lead to an observation of increased 2m interference. This includes what appears to be tropospheric ducting, but is actually fumaroles gases interacting in places where nothing works good, producing radio effects."

The recommendation from the Volcano Institute is to continue to monitor seismic activity at the repeater site.

"The only way to prevent an eruption," Dr. Forbis concluded "Is to continue to increase the number of wetlands on the mountain."



[illegible]

Thank you very much to everyone who helped with this class, including Pam Thompson at the Observatory, Palomar Mountain resident Chris Kusek, and PMVFD Fire Chief George Lucia. Without their support, classes like this don't happen.

ARRL has useful tools to help instructors. If you register with ARRL to become one of the over 2000 ARRL Registered Volunteer Instructors, then you will receive brochures and handouts along with other services especially designed for instructors. An instructor's manual and guidance on planning classes is another benefit of registering.

Phone service on the mountain was also disrupted, and traffic problems with thousands of visitors flocking to see the snow created transportation challenges for fire, police, and repair crews. For photos of the repeater site on 12 March 2006 see the PARC website at www.palomararc.org.

W5NYV 

CONTEST CALENDAR

Apr 1	Kids Roundup
Apr 1	Polish DX Contest
Apr 1	Spain RTTY Contest
Apr 1	QCWA Spring QSO Party
Apr 1	Missouri QSO Party
Apr 2	RSGB 80m Contest, CW
Apr 3	ARS Spartan Sprint
Apr 4	YLRL DX Contest, CW
Apr 4	144 MHz Spring Sprint
Apr 6	SARL 80m QSO Party
Apr 8	JIDX CW Contest
Apr 8	ARCI Spring QSO Party
Apr 8	Europe Spring Sprint, cW
Apr 8	Georgia QSO Party
Apr 8	Montana QSO Party
Apr 9	UBA Spring Contest, SSB
Apr 11	YLRL DX Contest, SSB
Apr 12	222MHz Spring Sprint
Apr 12	RSGB 80m Contest, SSB
Apr 15	ARLHS QSO Party
Apr 15	Estonia Open HF Contest
Apr 15	Europe Spring Sprint, SSB
Apr 15	Michigan QSO Party
Apr 15	Spain QRP CW Contest
Apr 15	Ontario QSO Party
Apr 15	Yugoslavia DX Contest
Apr 17	Run for the Bacon QRP Contest
Apr 17	Low Power Spring Sprint
Apr 20	432 MHz Spring Sprint
Apr 20	RSGB 80m Contest, Data
Apr 22	Colombian Int'l Contest
Apr 23	Polish RTTY Contest
Apr 23	Florida QSO Party
Apr 29	Helvetia Contest

An interesting mix of contests this month. All modes are represented. Toss in a Couple of state QSO parties and you have a mix to satisfy anyone. CU in the contest! 73 de Harry, W6YOO

President's Address

Steve Early AD6VI

President, Palomar Amateur Radio Club, Inc 2006

The March Program: "I have got my license...Now what?" is behind us. This program was well attended and covered a lot of territory. We had a number of new HAMs and first time visitors in attendance. This program is only a part of our ongoing efforts to support the local amateur radio community and all new HAMs.

The April 5th Program will be: "Restoring Vintage Radios" by Pat Bunsold. Pat will be covering many of the techniques used to recondition and then breathe new life into "Vintage" radios and the "Crest Radio Museum".

Looking down the road....

PARC tradition has several annual events, including Field Day (June 23-25), the Annual Picnic (August/September) and the PARC Auction.


Field Day: The Palomar Amateur Radio Club is looking for several new volunteers to help out on June 23, 24th and 25th. There are several needs that must be met.

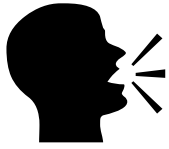
- 1) Volunteers to publicize/promote our Field Day event:
- 2) Volunteers for Set-Up.
- 3) Operators
- 4) Volunteers for Operator Support
- 5) Volunteers for Tear-down
- 6) Road Kill Cafe - Chef Le Mark (KF6WTN) has reported that, due to circumstance beyond his control, he will likely not be able to participate this year. A new Chef has been identified, but we are looking for additional Chef's In Training, to maintain the standard that Mark has set at the Road Kill Cafe.

Additional Field Day opportunities are likely to be identified as we approach June, so keep an eye on The Scope.

We will talk more about the picnic and auction, after Field Day

This year, the 2006 ARRL Southwestern Division Convention is also in town. The 2006 Southwestern Division Convention will be held in Mission Valley on September 22nd, 23rd and 24th. This annual event lands in San Diego only every fourth year. This is a great chance for local HAMs to see the latest tools and, equipment, and attend presentations (Forums) on many Amateur Radio topics. PARC has a tradition of supporting this convention by encouraging Member Attendance and Volunteer Participation. Opportunities to help are many. Please contact myself, ad6vi@cox.net, or see www.sandarc-conv2006.org/ for more information

See you on April 5th, at 7:30PM, in the Carlsbad Safety Center. 



NETS



Regular On-the-Air Nets sponsored by the Palomar Amateur Radio Club.

DAY	TIME	FREQ.	NET NAME	NET MANAGER CONTACT INFORMATION
T/R/S	2000	146.730	NTS Traffic Net	Charles N6TEP cmiele@juno.com
Sunday	0830	146.730	ARES Sunday Net	Dennis K7DCG
Sunday	2045	147.075	MARA ES	Glenn Jones KG6JDF@amsat.org
Monday	1915	146.730	RACES Sub-Net	
Monday	2100	146.730	Microwave Net	Kerry B.
Tuesday	1900	147.130	Red Cross Net	Ted tthompson@sdarc.org
Tuesday	2100	146.730	Off-Road Net	Jerry A. K6PFP jwak6pfp@cts.com Dick W. KA7AYT rwillmek@home.com
Wednesday	2000	146.730	Sailor's Net (stay tuned)	Mace
Thursday	1930	147.075	Young Hams Net (inactive)	
Thursday	2100	146.730	Ham Help (need ops)	David D KC6YSO@amsat.org
Friday	2100	146.730	Hiker's Net	Ed KF6DXX@juno.com Glenn P. KE6ZLY@juno.com
Nightly	>2200	147.130	Facetious Group	
Saturday	2000	52.680	6Mtr Emergency Services Net (inactive)	

Other nets that might be of interest to the membership

DAY	TIME	FREQ.	NET NAME	NET MANAGER CONTACT INFORMATION
Mon-Fri	2000	28.340	10 Meter Net	Dennie WA9MTP

Net Participation Tracker – A convenient form for participating in PARC nets.

NET	DATE	NOTES

Repeater Information

PARC Trustee: AB6QT

52.680 W6NWG -0.5 MHz

Autopatches: 146.730-, 147.075+, *147.130+, *447.000-

PKT: 145.050s (PALOMAR/W6NWG-1) 146.700-

(Duplex Pkt) PALBBS/EMG use 145.070/146.700-

(W6NWG-3/PALBBS)

ATV input: 915 wbfm, 2441.25 wbfm

ATV output: 1241.25 MHz am

Intercom: 146.415 PL 79.7 nbfm

Affiliated: 224.380-, 224.940 KK6KD (HARS) 447.050-

145.260 KK6KD (HARS)

146.175+ N6FQ (Fallbrook ARC)

Linked to: 445.600-, 224.900- WD6HFR (Corvair/220

ARC), 446.140- WB6FMT (123.0) Vista

†under repair * 107.2 Hz PL Tone

SCOPE Challenge

March Challenge Answers:

POWER is as easy as PIE. $P=IE$. 1 watt = 1 amp * 1 volt.

Ohm's law "The eagle sees the Indian by the rock."
 $E=IR$. 1 volt = 1 amp * 1 ohm.

Correct answers submitted by Marvin WB6PKK.
Also, February Challenge was also correctly answered by Howard WB6AKM. Congratulations Marvin and Howard!

License & Class Information

Register 5-7 days in advance for the following test sessions.

- PARC Testing is in Carlsbad on the 2nd Saturday of the month at 9:30am at the Carlsbad Safety Center. Test sessions may be cancelled if no one pre-registers. Contact Rusty Massie AA6OM at (760) 747-5872 or dunedancer@cox.net.

- EARS Testing is in Escondido on the Last Saturday of the month at 9:00 am at Fire Station #1 Escondido Fire Department. The address is 310 North Quince Street, Escondido CA 92025. Contact Harry W6YOO (760) 743-4212 or W6YOO@amsat.org.

- "The ARRL Technician Class Course for Ham Radio Licensing" Course No. EC-010 \$99 ARRL members / \$139 non-members. Courses begin on the first and third Tuesday of each month. For more information, email cce@arrl.org or via regular mail to ARRL CCE, 225 Main Street, Newington, CT 06111.

Escondido Amateur Radio Society Annual Auction

Thursday, April 13, 2006

Salvation Army Facility,

1301 Las Villas Way,

Escondido, California

6:00 p.m. Seller Registration

6:30 p.m. Buyer Registration

7:00 p.m. Auction Begins

Here is your opportunity to sell off your classic radio and electronic gear and to acquire something new for your shack. Art McBride will be Our Auctioneer. Come join in the fun!

HAM RADIO

Tom KM6K
Ron N6OMW
Jose XE2SJB
Bob KA6EKT

H
R
O

OUTLET

Open: 10a.m. – 5:30p.m. *Ask about our great prices*
Monday thru Saturday
858 560-4900 or toll free 1-800-854-6046

KENWOOD
rf CONCEPTS
DIAMOND
US TOWERS
KANTRONICS
YAESU
MFJ, ICOM
BENCHER, Inc.
HUSTLER
COMET
AMERITRON


Astron,
AEA,
OUTBACKER
Larsen Antennas
TEN-TEC
Hy-gain, Tri-EX,
Cushcraft
And
Others too
Numerous to
Mention!

Drop in to see our display of working equipment. Find out about Pkt location determining equipment (APRS). Check our complete line of magazines, ARRL books, license manuals, and Bulletin Board with all sorts of Goodies listed.

Directions: On 163, take **Clairemont Mesa Blvd.** off ramp to East. Stay in right-hand lane. Turn right at stoplight. As you are turning right you can see our beams in this shopping center. Travel 100 yds. On Kearny Villa Rd. and U-turn back to shopping area and HRO sign. Be sure to see our equipment in action on **real** antennas!

www.ac6v.com

This wonderful ham radio website, run by Rod AC6V, is a fantastic online resource for amateur radio information. With 700 topics, 6,000 links, and 132 pages, it weighs in at the top of the scale as one of the best topical indices of ham radio webpages. The site gets well over 1,000 hits a day. Readers from 127 countries have visited www.ac6v.com which been in operation since 1997. Unlike many sites that post reams of links, only to let them rot over time, Rod sees that the links at his site are checked monthly. This removes one of the most irritating things about resource sites – the dreaded 404 Page Not Found.

Thanks to Rod, things are easier to find on the ever-growing and often chaotic Internet. Thanks Rod, for doing such a great job and providing such a wonderful service to the ham radio community! 



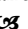
Current Needs

Volunteers are needed for the following club positions.

Del Mar Fair VOLUNTEERS
2006 Field Day Chair.
Ham Help Net Operators.
Assistant southwest division director.

We are actively seeking people for these positions. If you or someone you know has expressed interest in getting more active in amateur radio, these positions are excellent ways to fulfill that wish!

Training is provided for all these positions, and the time commitment ranges from low to medium.

Each and every volunteer is greatly appreciated and makes our club more successful. 

PARC 2006 Board

President: Steve Early AD6VI
(619) 461-2818 AD6VI@cox.net
VP: Dennis Baca KD6TUJ
(760) 722-0251 KD6TUJ@amsat.org
Sec: Gary Kent W6GDK
(858) 679-0578 W6GDK@arrl.net
Treas: Bob Birch KG6RGI
rrbirch@cox.net
Dir: Tom Martin KG6RCW
Dir: Mark Raptis KF6WTN
(760) 749-4825 KF6WTN@amsat.org
Site Management:
Mike Pennington K6MRP
K6MRP@amsat.org
Membership: Al Donlevy W6GNI
(760) 630-3096 W6GNI@amsat.org
Site Tech: Mike Doyle AB6QT
(760) 742-1573 AB6QT@amsat.org

IMPULSE Electronics
(760) 747-5277 – (866) 747-5277
www.impulseelectronics.com

**Your Connection for
Emergency Power Solutions**

Power Products

Power Pole Connectors – Power Cables – Tools
AGM Batteries – Red/Black Zip Cord 14 – 8 GA

West Mountain Products

RIGrunner – RIGblaster – Accessories
PWRgates – Computerized Battery Analyzer
Coax Cable – Coax Assemblies – Adapters
Terminals – Coax Connectors – Battery
Chargers – Battery Accessories
Email sales@impulseelectronics.com

RF PARTS Company

From MILLIWATTS to KILOWATTS

435 South Pacific St., San Marcos, CA 92078

RF POWER TRANSISTORS – TUBES – POWER MODULES

3-500ZG – 811A – 572B – 4-400A – 6146B & W – 8072 – 8560AS

3CX400A7 – 3CX1200A7/D7/Z7 – 3CX1500A7 – 3CX3000A7

4CX250B & R – 4CX400A

Complete Inventory for servicing Amateur and
Commercial Communications Equipment

Transistors – Modules – Diodes – Relays – Trimmers – Capacitors
Heatsinks – Transformers – Chokes – Combiners – Wattmeters
Books

Merit W6NQ – Gary K6CAQ – Steve K6NDG – Doug K6DRA – Rob
WA6GYG

760-744-0700

An address to remember:

<http://www.rfparts.com/>

e-mail: rfp@rfparts.com

Send for your FREE 2005 Catalog or visit our website.

NiCd Lady Company

Grace Lloyd

N6WPA

grace@nicdlady.com

www.nicdlady.com

Custom Assembly • Rebuilds • Batteries
• Lead Acids • Replacement Packs

20585 Camino Del Sol • Unit B
Riverside, CA 92508
800/906-6423
951/653-8868
Fax 951/653-5189

Your Complete Battery Source

FOR SALE

Personal equipment ads are free to members and could be bumped after 3 months. Make up your ad like the ones on this page and send to

SCOPE@PALOMARARC.ORG

Commercial ads in big boxes: \$2/col. inch/month. We will squash your ad copy to the number of inches bought.

(2.2) Tempo S-2 (220 Mhz) Handheld with SS32 PL & DTMF built w/charger \$40.00, Galaxy Electronics Phone Patch PR-550 \$10.00, Avenger 4000 Commercial Alarm System, w/8 PIR's, keypad, 2 sirens, 1 sonic \$80.00 OBO, 13 Inch Sony Industrial Video Monitor Model PVM-1390 \$20.00 OBO, 54" Oak Roll Top Desk, excellent Condx \$350.00 OBO, Sentry Fireproof Combo Safe \$30.00 OBO, Heath SWR meter model HM-102 (needs meter cover) w/remote pickup \$10.00 OBO, IBM Clone Desktop 350 Mhz Pentium II computer 6 Ghz HD \$30.00 OBO, International Video/Audio signal processor/distribution Amp w/full studio controls \$40.00 OBO, VHF/UHF Conical Monopole Vertical \$10.00, Panasonic KX-F50 Phone answering machine/FAX \$10.00, Computer Desk w/wheels \$20.00 OBO, Kerosene Heater w/extra wicks \$30.00, Many Panasonic Video accessories, 200 Laser Movies Contact for List \$5.00 each, Some collector Directors cuts, Contact Dennis K7DCG 858-748-9046 or email K7DCG@aol.com

(12.6) Wanted: A 500 to 1KW amp for disabled ham. Please phone (760-724-0049) or e mail (sstires@cox.net) for details.

Thank you...WA5ACE

(9.13) Ham-friendly property FOR SALE. www.pettus.us

(2.19) Coronado Hills Property for Sale see <http://www.kf6c.com/SanMarcosProperty.htm>

(3.13) For Sale: Yaesu FL 2100B linear amp

with manual. Checks out good on 80 thru 15, a bit unstable on 10. Ask \$350 or interesting trade. Ron K2RP 436-8109 K2RP@ARRL.NET.

(3.13) Wanted: YAESU FP-707 power supply. Would also consider purchasing other accessories for FT-707 rig. Contact Jack Jennings KG6RWI, (760) 749-4572 or kg6rwi@aol.com

FOR SALE: Hy Gain - Hy Tower 5 band (80 thru 10) vertical antenna. This is a freestanding antenna that requires a 3-foot square cement base. It has S.S. hardware. I'm asking \$300.00 and you pick up in Fallbrook. The first two sections break down into 10-foot sections and the rest is tubular. **Call Dale (W6IWO) at (760) 728-6800**

PALOMAR ENGINEERS **Box 462222, Escondido, CA 92046** **TOROID CORES**

Palomar stocks a wide variety of cores and beads. Our RFI Tip Sheet is free on request. Our RFI kit keeps RF out of your telephones, TVs, stereo, etc. **Model RFI-4 \$25 +tax+\$6 to ship.**

BALUN KITS

Ferrites slip over coax. Shrink tubing holds them in place. Works from 3.5-60 MHz (Use two kits for 160m).

Model BA-58 (for RG58, RG8X & similar cables up to 1/4" dia. \$7.50+tax+\$6 S&H/order

Model BA-8 (for RG-8, RG-213, 9913 and similar cables up to 1/2" dia. \$15+tax+\$6 S&H/order.

TUNER-TUNER

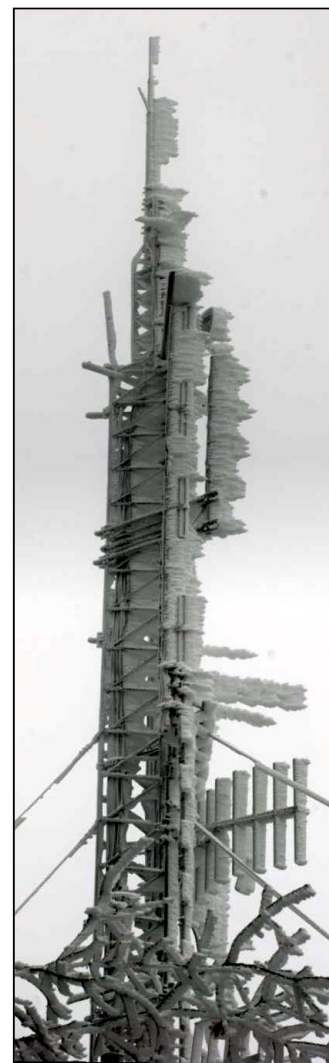
Tune your tuner without transmitting. Save that rig! Just listen to the Tuner-Tuner's noise with your receiver. Adjust your tuner for a null and presto! You have a 1:1 SWR.

Model PT-340 \$99.95+tax+\$6 S&H

See catalog at www.Palomar-Engineers.com
Please check our complete ads in **QST**, **73**, **CQ**, and **World Radio** magazines.

SCOPE Challenge:

A woman shoots her husband. Then she holds him under water for over 5 minutes. Finally, she hangs him. But 5 minutes later they both go out together and enjoy a wonderful dinner together. How can this be? Send your solution to scope@palomararc.org!



W6NWG on 12 March 2006

Photo by W5NYV

Committee Chairpersons

ARES Info	Tony	KC6YSP
ARES Net	Dennis S.	K7DCC@amsat.org
Attendance	Al	W6GNI@amsat.org
ATV	Art	KC6UQH@amsat.org
Auction	Tom M.	KG6RCW@amsat.org
Badges New	Al	W6GNI@amsat.org
Batteries	David	
BK6EBYDAT@Gerry.Palomar.caltech.edu		
BBS Monitor	Bill B.	N6FMK@amsat.org
Billing Ads/etc	Jo A.	KB6NMK@amsat.org
Contest Info	Dennis V.	N6KI@amsat.org
Control Ops	Filled	W6NWG@amsat.org
Del Mar Fair	Jim Cooper	NE6O@amsat.org
EmComm	Harry	W6YOO@amsat.org
	Dennis V.	N6KI@amsat.org
Field Day	needed!	
Field Day Tech	John K.	WB6IQS@amsat.org
Inventory	Dennis B.	KD6TUJ@amsat.org
New Member	Christy M.	KI6AOL
Nets	PARC	Board@palomararc.org
Newsletter	Filled!	W5NYV@amsat.org
Patch Info	Stan	W9FQN@amsat.org
Patch Electronics	Jerry H.	WB6FMT@amsat.org
Picnic	Mark R.	KF6WTN@amsat.org
Power AC/DC	Mike P.	K6MRP@amsat.org
Programs	Dennis B.	KD6TUJ@amsat.org
Publicity	Terry R.	K3PXX
QSL Cards	Harry H.	W6YOO@cox.net
RACES Info	Jo A.	KB6NMK@amsat.org
RED Flag	Steve	AD6VI@amsat.org
Repeater Site	Mike P.	K6MRP@amsat.org
Repeater Tech	Mike D.	AB6QT@amsat.org
SANDARC	Jin/Steve	NE6O/AD6VI
Seller Table	John K.	WB6IQS@amsat.org
Asst. SWD Dir	needed!	
Testing VE	Rusty	dunedancer@cox.net
Trustee	Mike D.	AB6QT@amsat.org
Web	Paul W.	www.palomararc.org

Field Day

June 24-25, 2006

Always the Fourth Full Weekend In June


KB5MU Granted Wetlands Status

Michelle W5NYV

We're pleased to hear that KB5MU's QTH on Palomar Mountain is the newest coastal zone! (see California Code of Regulations 14 CCR 13577 for details) In a routine inspection, both hydric soils and extensive growth of hydrophytes were observed in what appeared to be an old swimming pool. Some of these hydrophytes were an extremely endangered species (*Codjor iratus*) that only exists in the presence of strong RF fields.

Even though vegetation was lacking and soil was poorly developed, the presence of surface water or saturated substrate at some time during the previous ten years had been continuously recorded by various government agents that have made, to date, almost 300 helicopter surveys of his location.

A source with the state, who wished to remain anonymous, sketched out plans for the newest coastal zone.

"Soon we will move in to the site in order to evaluate the exact type of wetland. Is it seasonal or perennial or permanent? This makes a difference on the forms. Is it a marine, estuarine, lacustrine, riverine, or a palustrine wetland? The owner will probably want to proudly install signage that indicates the classification and type of wetland! I know I would. I've been working on developing a palustrine wetland in my sink for about four years. It's a lot of work, and KB5MU needs to be commended for his environmental achievement! It's especially important given that wetlands help prevent volcanic eruptions, and we all know what a mess an eruption would be." 



Del Mar Fair HAM BOOTH

Jim Cooper NE6O

We need operators to man the Amateur Radio Booth at the San Diego County/Del Mar Fair! Please contact NE6O to volunteer.

The Fair runs from June 15, 2006 to July 4, 2006. Volunteer for any time slot you want and I will check to see if it is available. Volunteer early to make sure you get a chance!

There will be two shifts per day, 10am to 2pm, and 2pm to 6pm. We need two people per shift.

The Palomar Club has committed to staffing the booth on Thursday, Friday, and Saturday June 15-17. We will try to fill this time slot first.

I will start assigning times in the next month or so. If you want a specific shift, let me know as soon as possible before someone else takes it!

There is a very professional-looking booth. It will have VHF and HF equipment (courtesy of HRO) and antennas to match. This is a good chance to try out some new modes and see what you like.

Working at the booth is quite an experience. Last year I had several kids playing with code practice oscillators until their parents pulled them away to go to the Fun Zone! (This is for real!) Just show your enthusiasm and the rest is easy.

For working a shift of 4 hours, you get FREE admission for the whole day.

So far we have 27 volunteers from PARC. THANK YOU. But, we can use more.

If you can help with a shift (or two), please contact me NE6O on the air, at the meetings, by email, or by the old telephone.

73

Jim Cooper NE6O

Ne6o@amsat.org

760-727-8446 home

760-473-1050 cell

760-930-7242 work



Amateur Antenna on Palomar Mountain, located close to W6NWG, 12 March 2006.



Top of W6NWG tower, 12 March 2006.

Interference


What do you do?

The easiest way to stop intentional interference is to ignore it.

Do not talk to or about an interfering station on the air.

Do not mention that a direction-finding team is after him or her.

On occasion, you may be asked to keep an interfering station on the air by talking to him or her. This is a rare request, but it's worthwhile under certain circumstances.

Direction-finding and subsequent investigations are very often successful. The punishment for intentional interference is large. The job of policing the bands falls to all of us, and developing the skill set in handling intentional interference is as important as developing good operating skills and reducing non-human harmful interference. 

Palomar Amateur Radio Club
P.O.Box 73
Vista, CA 92085-0073

PERIODICALS
US POSTAGE
PAID
AT VISTA CA
92085-9998

ADDRESS SERVICE REQUESTED



We're on the web! Find us at www.palomararc.org. See the newsletter in COLOR! Check out sets of PHOTOS!

About our Newsletter

Scope (USPS #076530) is published monthly by the Palomar Amateur Radio Club 1651 Mesa Verde Drive, Vista, CA 92084. Periodicals postage paid at Vista, CA 92085. Dues are \$18 per year or \$30 per year for a family. Dues include a subscription to Scope. Editor: Michelle Thompson W5NYV.

Submissions: scope@palomararc.org

Questions? Ideas? Comments? W6NWG@amsat.org

About our Organization

The Palomar Amateur Radio Club serves the Amateur Radio community of San Diego County California with repeaters located on Palomar Mountain. The club has monthly meetings, Field Day festivities, an annual auction, and many other fun and interesting functions. All are welcome at our club meetings and on-the-air interactive radio nets which now feature discussion groups on hiking, sailing, microwave, off-roading, as well as traditional message traffic and emergency communications nets (RACES - ARES - MARA).

73 and hope to CU you on the air! -NN3V

Meeting Location and Time

This month's General Meeting will be held on April 5th, 2006 (the first Wednesday of each month) at the Carlsbad Safety Center. The meeting will be "Restoring Vintage Radios". Talk-in on 146.730 MHz repeater. Meeting starts at 19:30. Ridesharing and coordinating for dinner beforehand often occurs on the repeater on Wednesday afternoons. Everyone is welcome!